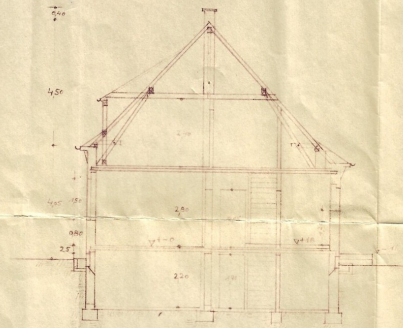
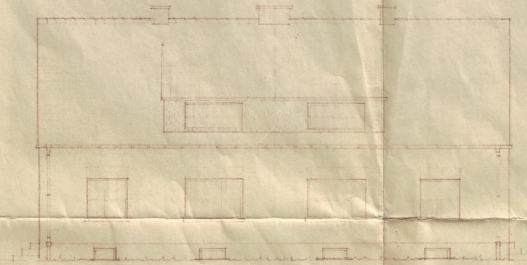


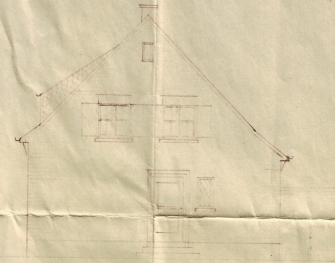
Entwurf zu einem Doppelwohnhaus für Herrn W. Scheich u. Herrn Th. Löhner, Lank-Latum, an der Mittelstraße - M. 1.100 -



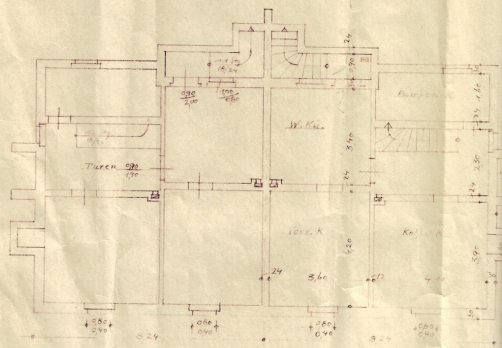
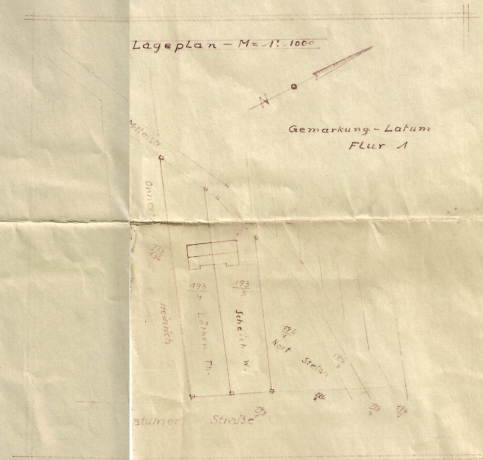
Schnitt A-B



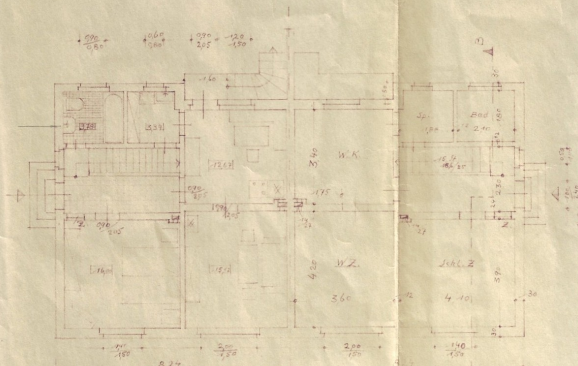
Vorder-Ansicht



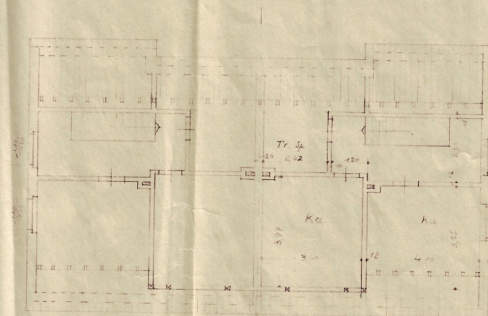
Giebel



Keller-Geschoß



Erd-Geschoß



Dach-Geschoß

Lank-Latum den Januar 1935

Die Bauherren: